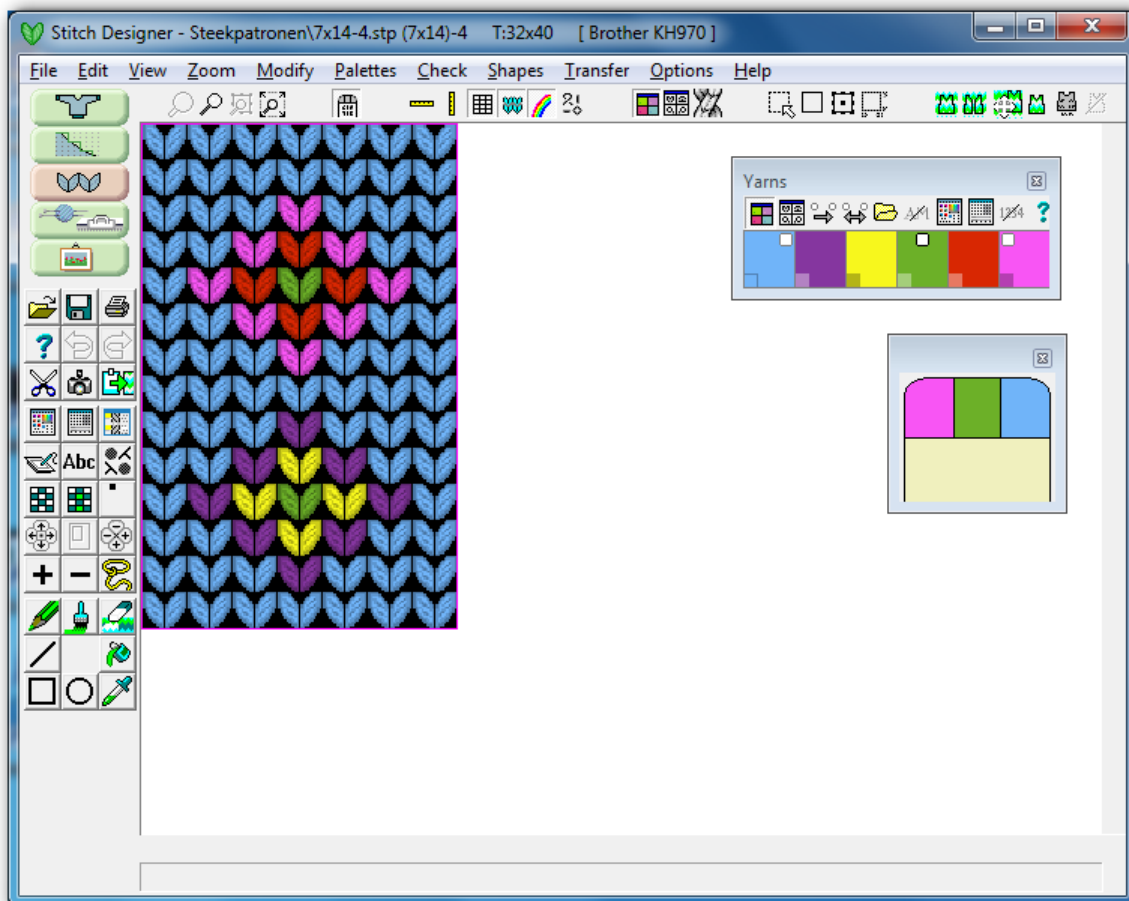


DesignaKnit and CB-2

This application note describes some of the ways you can knit with the CB-2 a stitch pattern created with DesignaKnit.

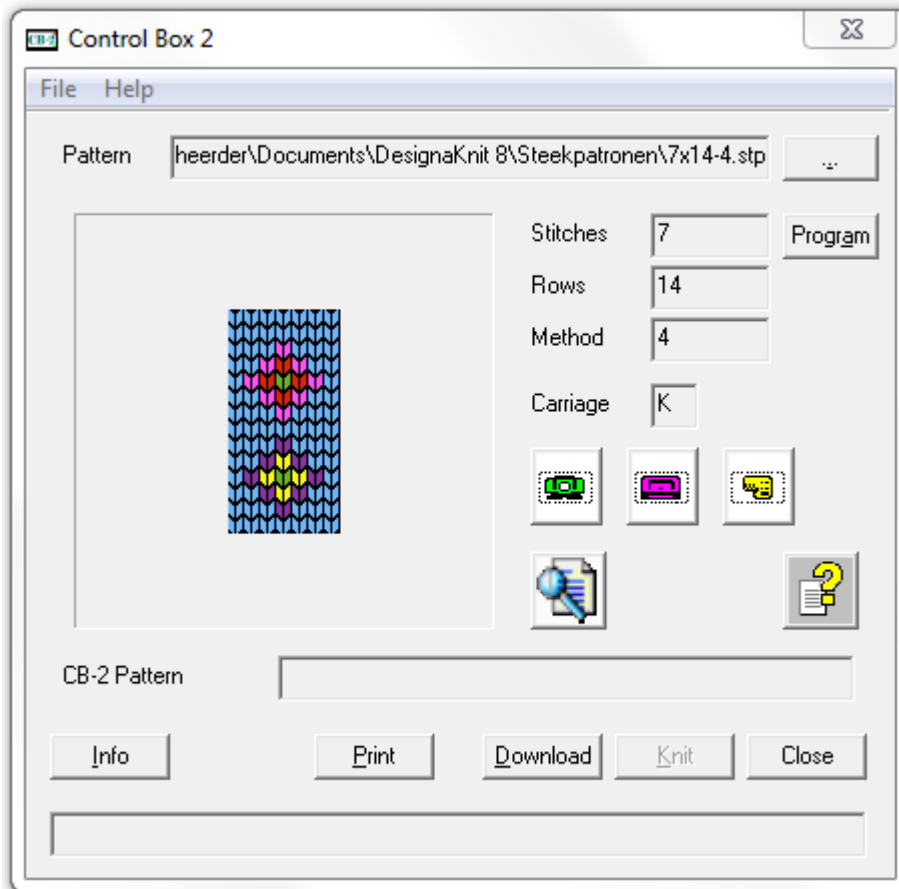
DesignaKnit

One of my favorite stitch patterns is:



CB-2 Utility

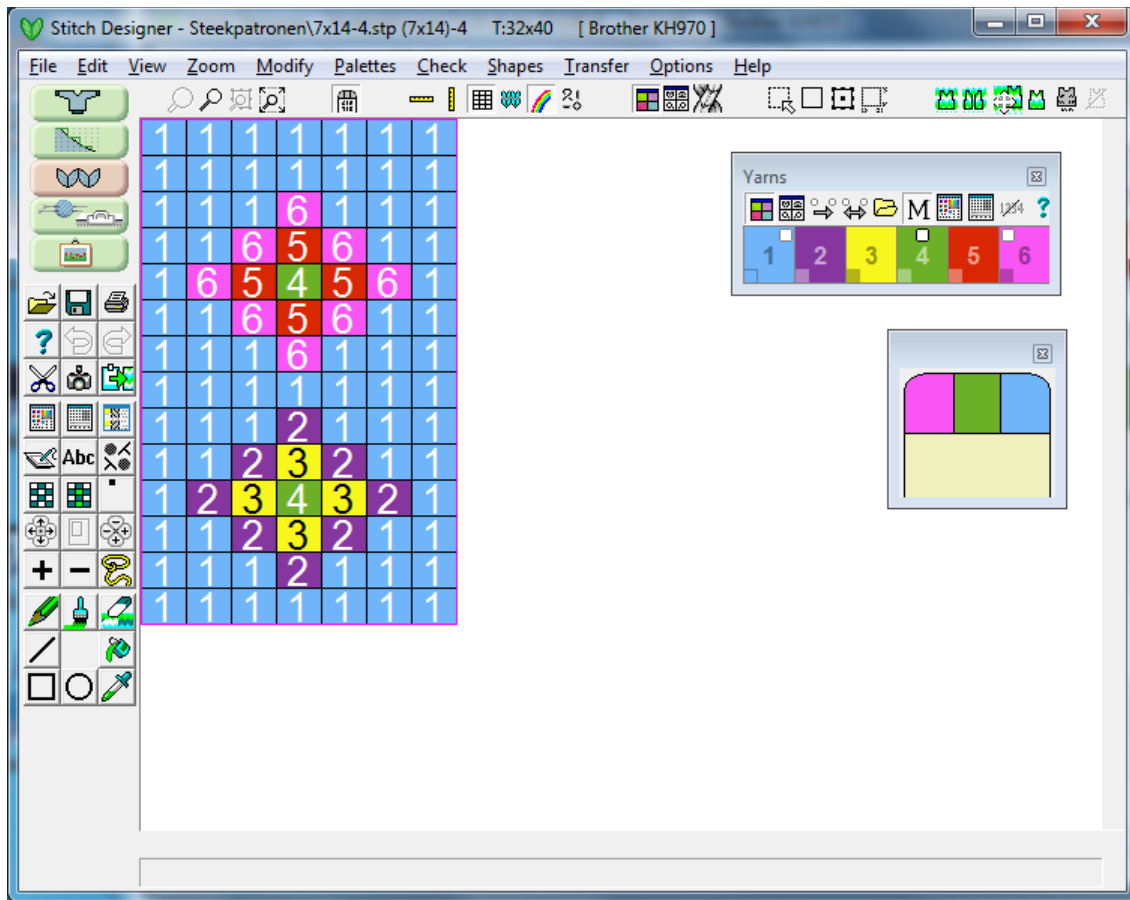
You can open the pattern in CB-2 Utility by using the browse (...) function.



The stitch pattern 7x14-4.stp has maximum 4 colors in a row which results in Method 4. The total number of colors used in the stitch pattern is 6, which means that the stitch pattern can be knitted with the KRC1000E, KRC1100M or EC-2000 color changer without the need of rethreading.

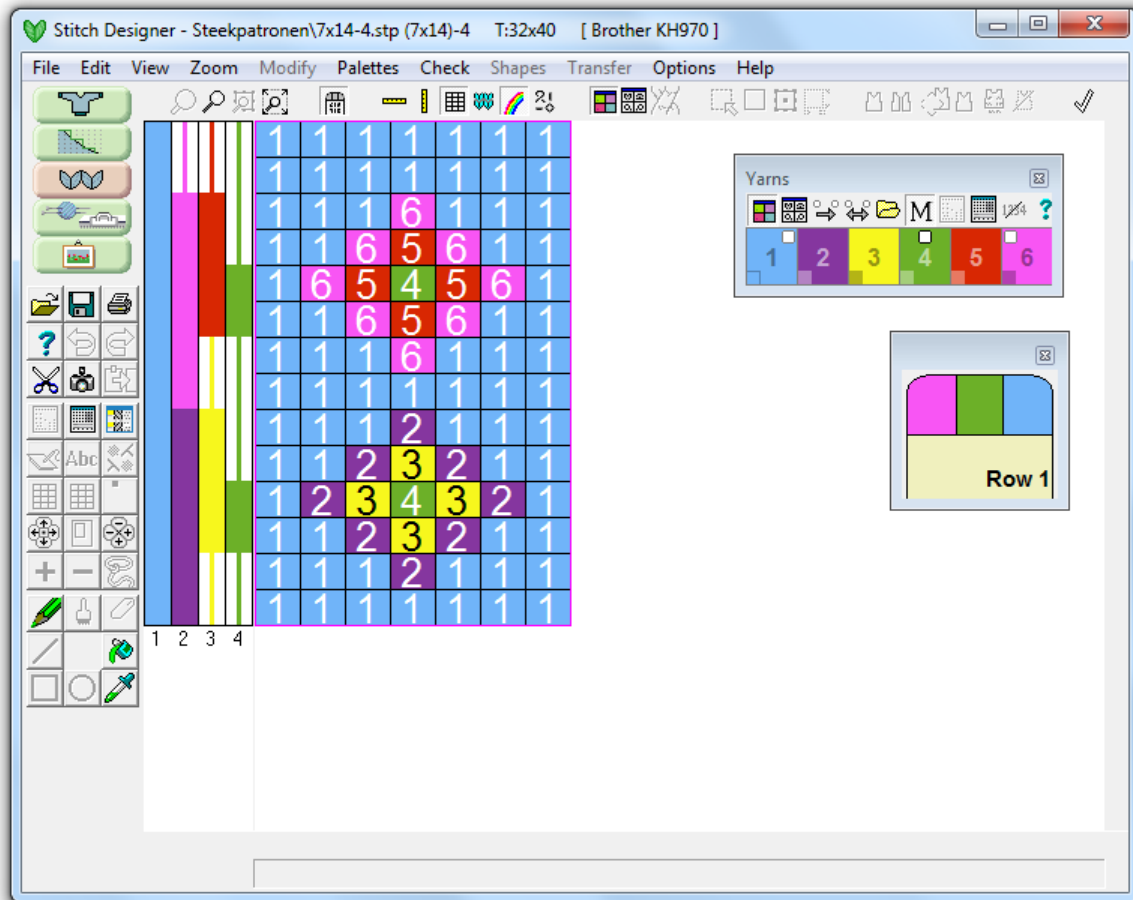
Memo Numbers

To make optimum use of these color changers, you need to set the memo numbers in your stitch pattern in DesignaKnit. The design 7x14-4.stp has the memo numbers set.



Yarn numbers / Feeders

Another prerequisite for knitting a 4 color stitch pattern is the setting of Yarn numbers / Feeders

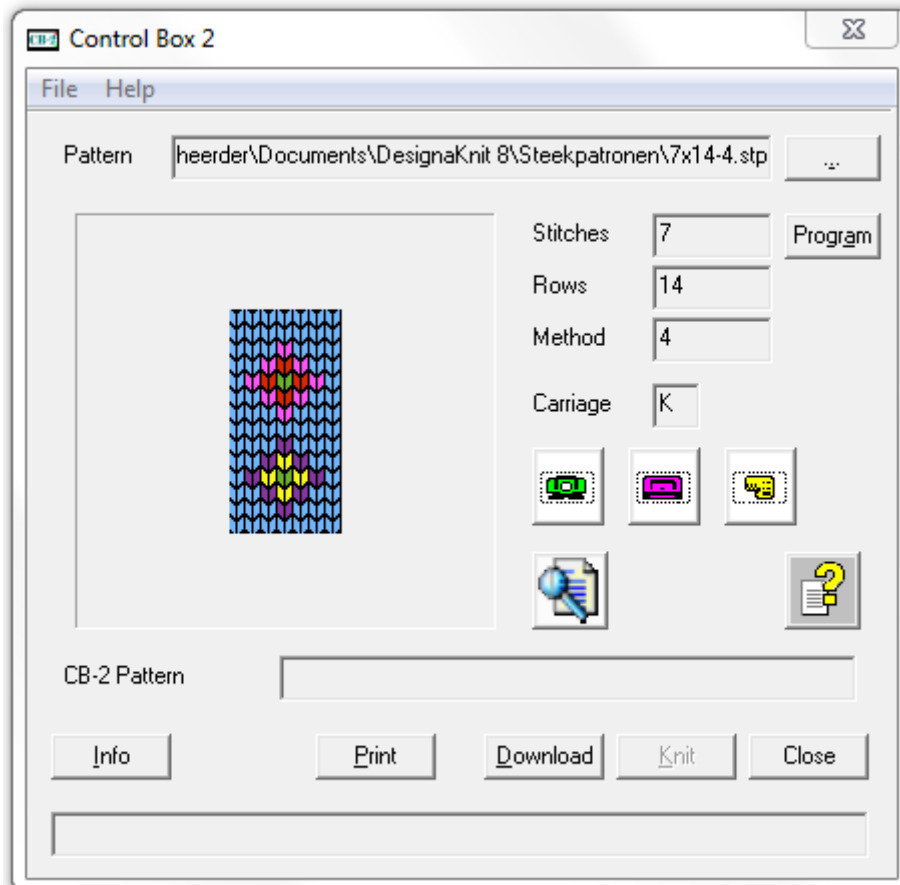


The Yarn numbers / Feeders setting determines the order in which the colors will be knitted. This setting is used by the CB-2 software when knitting a 4 color fairisle rib jacquard. In DesignaKnit this setting is called Jacquard, Color Separation B.

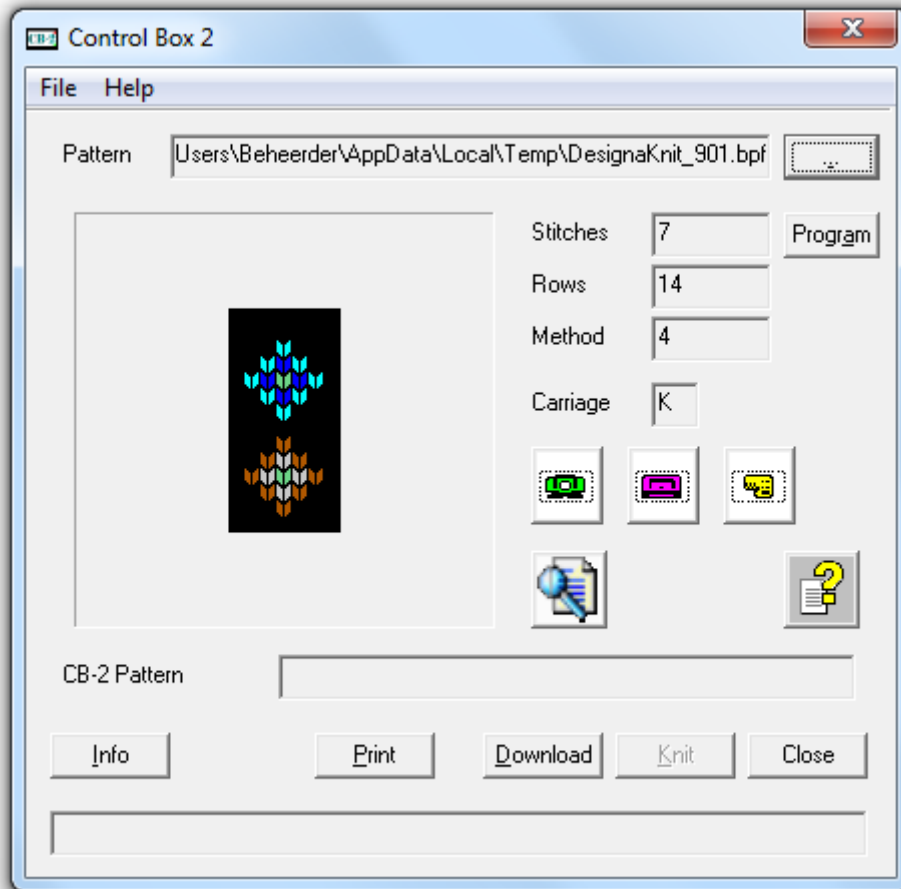
Open pattern in CB-2 Utility

There are three ways to open the stitch pattern 7x14-4 in CB-2 Utility:

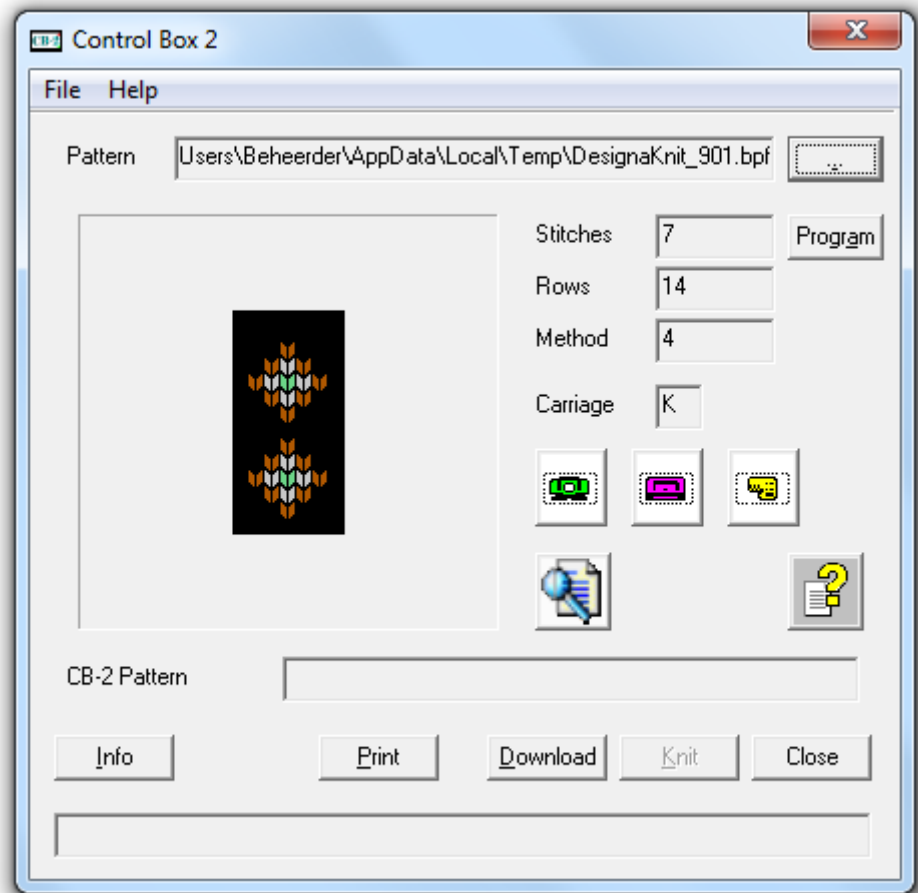
1. Press the browse button (...) and after that **Browse...**, locate the stitch patterns and press **Open**.



2. Press the browse button (...) and after that **DesignaKnit** and download separated (choice in **Transfer, Download**)



3. Press the browse button (...) and after that **DesignaKnit** and download unseparated (choice in **Transfer, Download**)



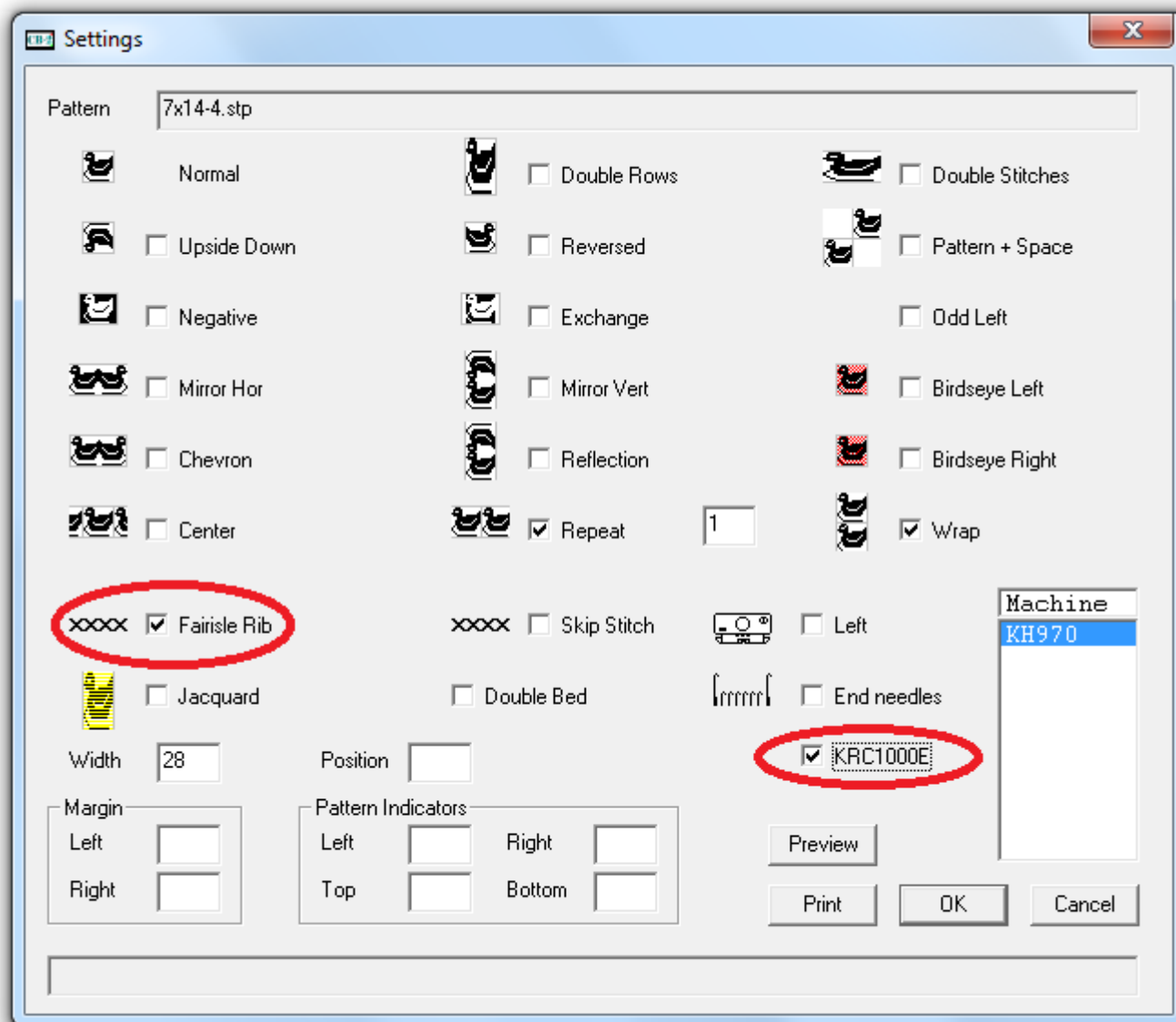
Note that DesignaKnit has reduced the number of colors to 4.

Downloading the stitch patterns (fairisle rib)

CB-2 utility recognizes in all three cases that the stitch patterns is a 4 color fairisle rib stitch pattern and reconstructs the 4 color pattern.

The reconstructed 4 color stitch patterns can all be knitted almost the same way.

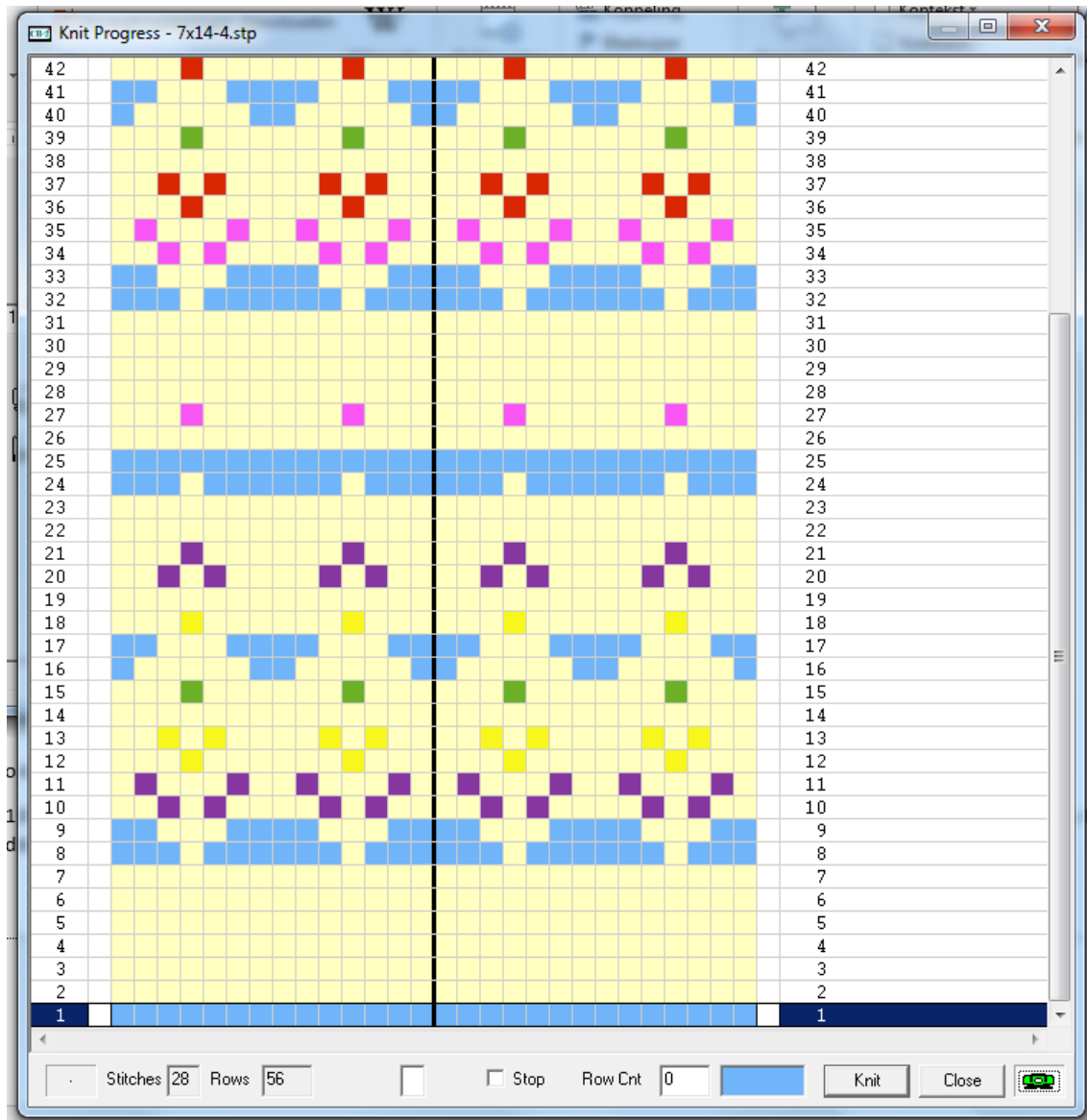
First we need to download the stich pattern.



The Fairisle Rib variation is turned on to tell CB-2 Utility it needs to knit a multi-color fairisle rib pattern. CB-2 Utility will take care of the separation.

The KRC1000E option is turned on as we are going to use the KRC1000E color changer. For some stitch patterns, the KRC1000E option is not needed as they may have memo numbers etc. For some other stitch patterns, the KRC1000E option must be turned on as CB-2 Utility knows that the 6 color changer must be addressed. Turn on the option always doesn't harm the knitting.

Knitting the stitch pattern

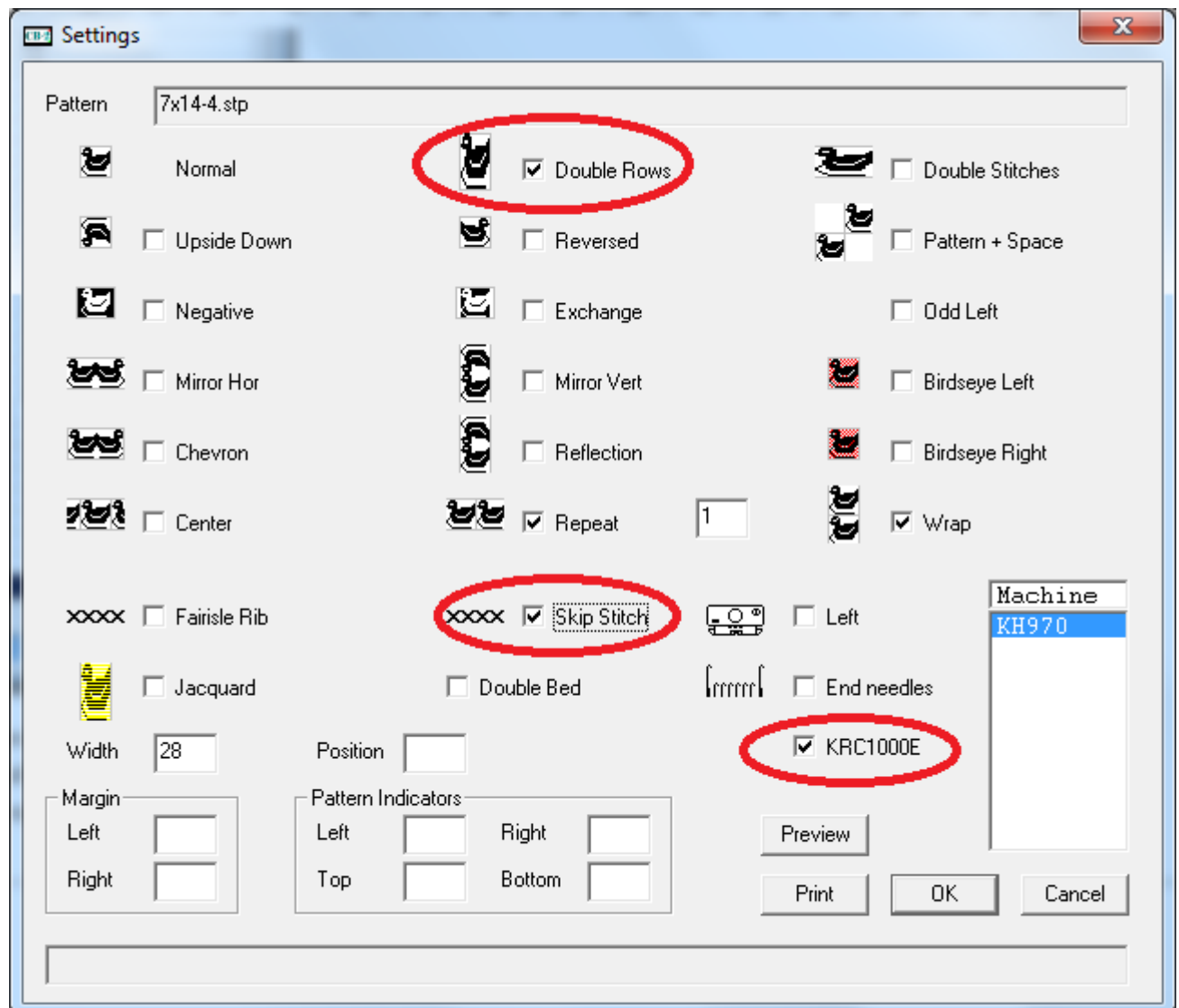


Above you can see the separated design. The first 16 rows follow the scheme 1,2,2,3,3,4,4,1
 Row 17-24 follow the scheme 1,3,3,2,2,4,4,1. Row 25-32 follow the scheme 1,6,6,3,3,4,4,1.
 Row 33-40 follow the scheme 1, 6,6,5,5,4,4,1. Row 41 -48 follow the scheme 1,5,5,6,6,4,4,1.

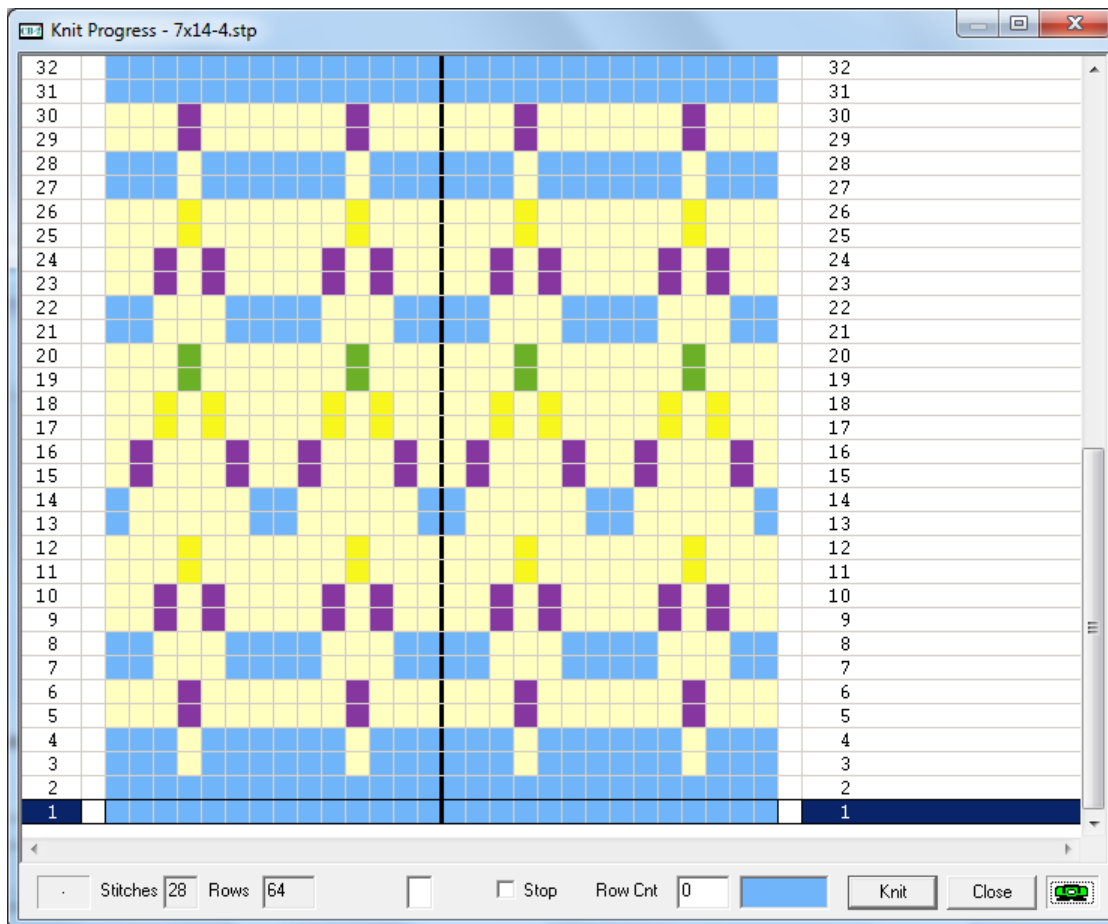
Downloading stitch pattern (Skip Stitch)

You need to adhere to the rules of skip stitch patterns obviously. One of the main rules of a skip stitch pattern is that rows are paired and that the pairs must have the same stitches.

My favorite design obviously doesn't have that, but we can make this happen by turning on the variation Double Rows (Double Length in CB-1 doc).

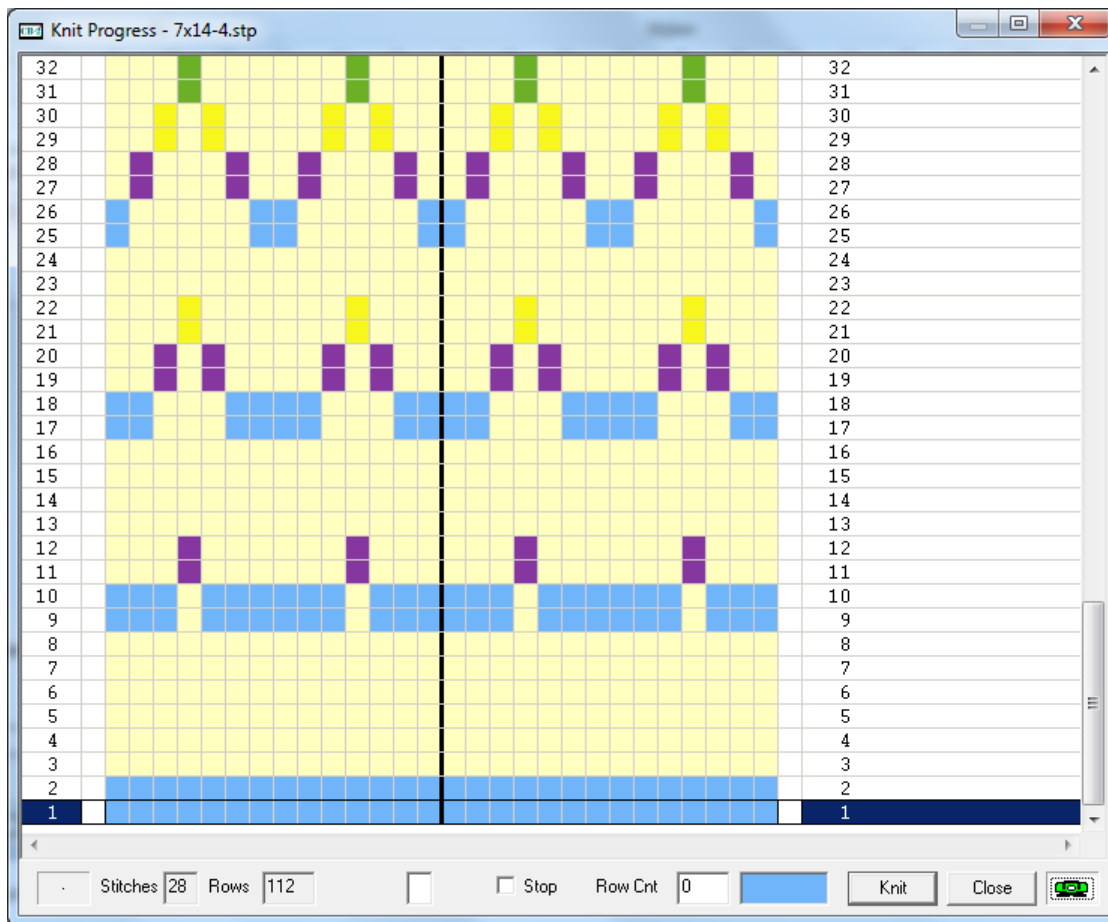


And the knit progress window will show:

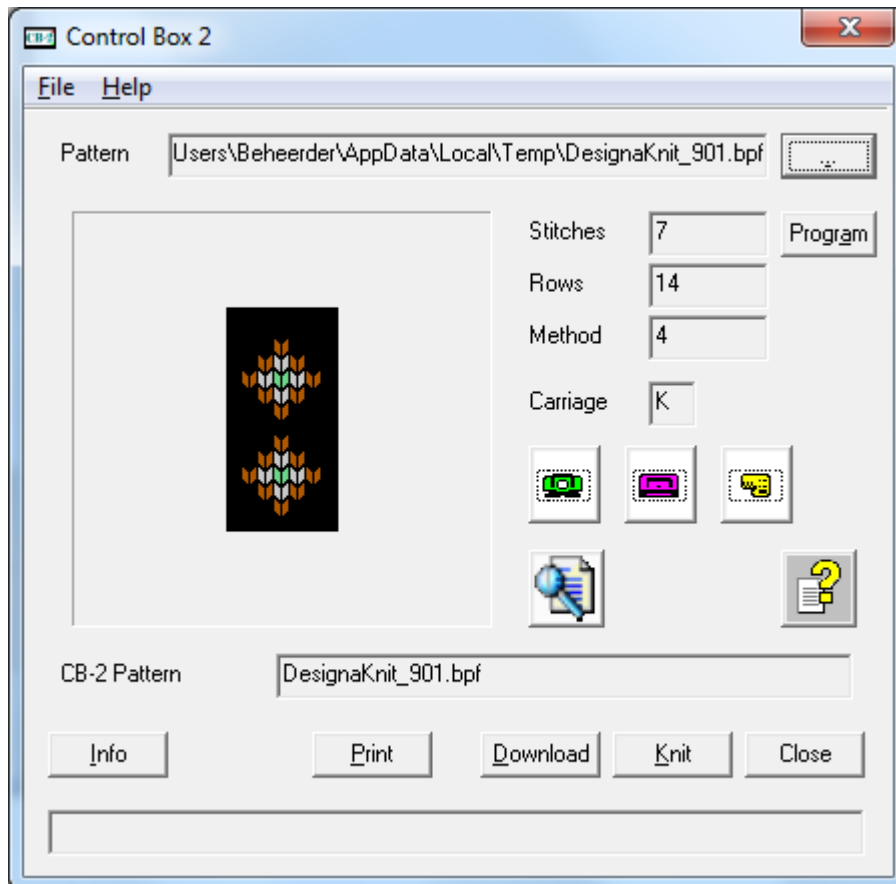


Above you see that the first 2 rows only are knitted with color 1. If you want to knit with all colors, you need to turn on the option Double Bed.

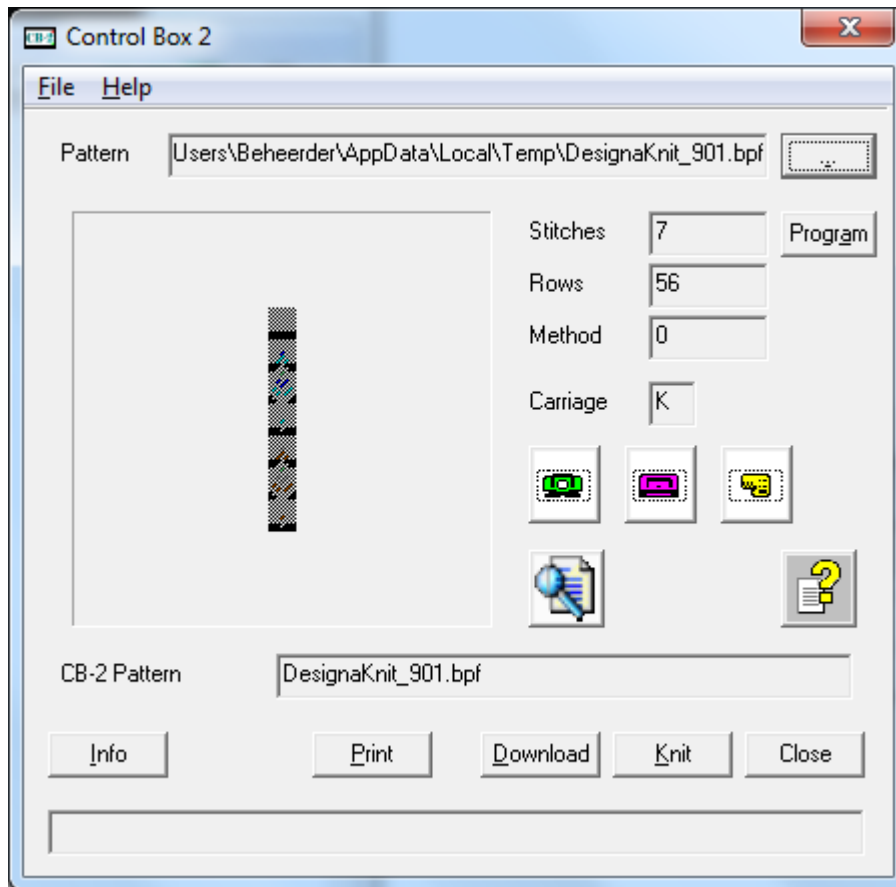
The knit progress window with Double Bed turned on will look like:



When you download the stitch pattern from Designaknit with separation set to Jacquard, Color Separation A, unseparated, you get the same as when you download Jacquard, Color Separation B unseparated.

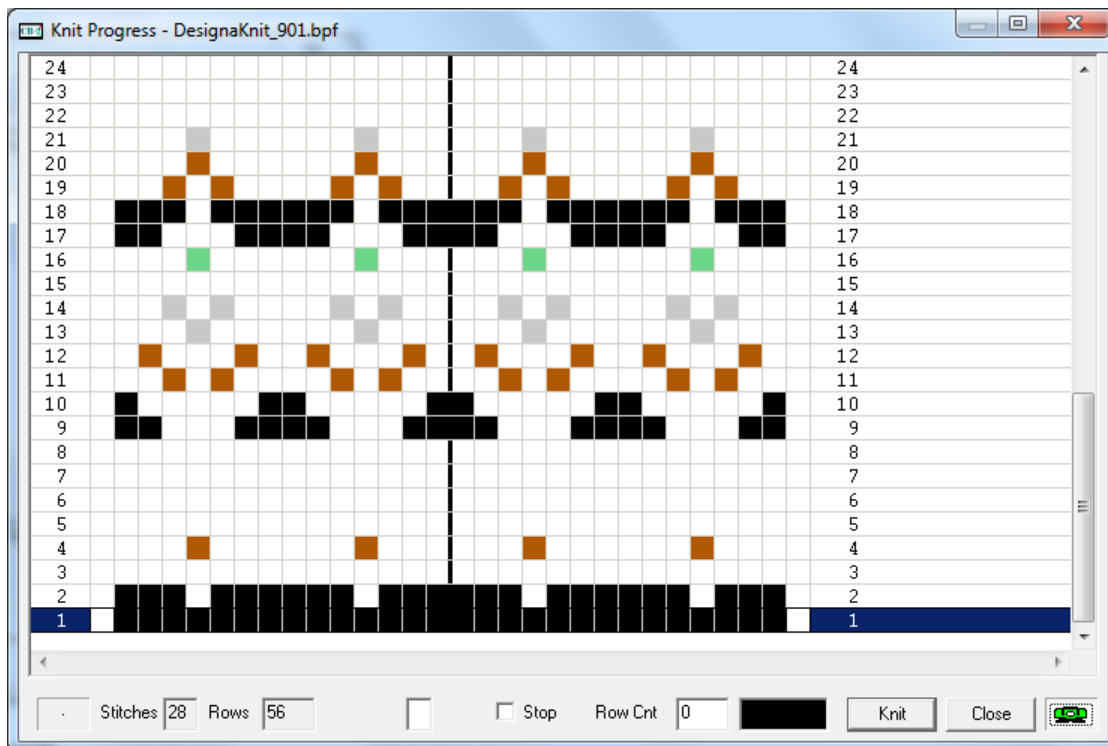


The last way of loading our favorite stitch pattern is separated by DesignaKnit with Jacquard. Color Separation A. Actually one should not try to do this as DesignaKnit will attempt to send a stitch pattern that doesn't adhere to the main rule of Skip Sitch patterns. The result is:



You see here a fair isle stitch pattern that cannot be reconstructed into the 4 color stitch pattern it was before the separation.

If you download the stitch pattern as a fair isle pattern, you will see after you press **Knit**:



Row 18 and 19 are Jacquard errors.